

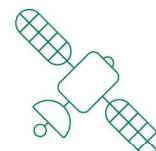


# 2026 Fall Semester International Admissions (2nd & 3rd Rounds)

2026. 5.



**대구대학교**  
DAEGU UNIVERSITY



# CONTENTS

<b>I. Information for International Student Admissions</b>	<b>1</b>
1. Application Unit & Quota	1
2. Application Eligibility	10
3. Admission Schedule & Process	12
4. Required Documents	15
5. Tuition Information	17
6. Scholarship Information	19
7. Dormitory Information	20
8. Notes for Applicants	21
9. Notes for Successful Applicants	21
10. Contact Information	22
<b>II. Other Information on the International Special Admission</b>	<b>23</b>
11. Online Application Manual	23
[Attachment 1] Apostille Certificate Guide	24
[Appendix 1] Guide to Application Documents(Vietnamese/ Tiếng Việt)	25
[Appendix 2] Guide to Application Documents(Uzbek/ o'zbek)	26
[Appendix 3] Guide to Application Documents(Mongolian/ Монгол)	27
[Appendix 4] Guide to Application Documents(Japanese/ 日本語)	28



# I Information for International Student Admissions

## 1. Application Unit & Quota

- Application Unit: Marked '○', Applicant are eligible to apply
- Recruiting Quota (freshman) : No limit

### 1) Korean-Medium Track

College	Application Unit	Freshman	
College of Public Service 공공인재대학	Division of Public Safety 공공안전학부	Fire Service Administration 소방·행정학전공	○
		Public Service Law 공직법무전공	○
	Division of Police 경찰학부	Police Administration 경찰행정학전공	○
		Self-Government Police 자치경찰학전공	○
	Dept. of Military Science 국방군사학과		○
	Dept. of Real Estate and Land Administration 부동산·지적학과		○
College of Global Business 글로벌경영대학	School of Business* 경영학부*	Business Administration 경영학전공	○
		Accounting 회계학전공	
	Dept. of Economics, Finance and Trade 경제금융통상학과		○
	School of Hotel & Tourism Management* 호텔관광경영학부*	Tourism & Airline Management 관광항공경영전공	○
		Hotel, Tourism & Food Service 호텔관광외식서비스전공	
	Dept. of Japanese Language & Studies 일본어일본학과		○
College of Social Sciences 사회과학대학	Dept. of Social Welfare 사회복지학과		○
	Youth Counseling and Welfare 청소년상담복지학과		○
	Dept. of Child & Family Welfare 아동가정복지학과		○
	Dept. of Lifelong Education & Senior Welfare 평생교육실버복지학과		○
	Division of Media Communication* 미디어커뮤니케이션학부*	Visual Contents 영상콘텐츠전공	○
		Advertising Public Relation 광고PR전공	
	Dept. of Library & Information Science 문헌정보학과		○
	Dept. of Psychology 심리학과		○

College	Application Unit	Freshman	
College of Health and Biology 보건바이오대학	Dept. of Health and Medical Sciences 보건의료학과	○	
	Dept. of Emergency Medical Service 응급구조학과	○	
	Dept. of Animal Resources 동물자원학과	○	
	Dept. of Companion Animal Industry 반려동물산업학과	○	
	Dept. of Smart Horticulture 스마트원예학과	○	
	Dept. of Food Processing 식품가공학과	○	
	Dept. of Reproductive Medicine Industry 난임의료산업학과	○	
College of IT·Engineering IT·공과대학	Dept. of Architectural Engineering 건축공학과	○	
	Dept. of Fire Safety and Disaster Prevention 소방안전방재학과	○	
	Division of Mechanical & Automotive Engineering* 기계자동차공학부*	Mechanical Engineering 기계공학전공	○
		Automotive Engineering 미래자동차공학전공	
	Dept. of Food and Nutrition 식품영양학과	○	
	Dept. of Landscape, Forest and Garden Design 조경산림정원학과	○	
	Dept. of Eco-friendly Energy Engineering 친환경에너지학과	○	
	Division of Electronic & Electrical Engineering 전자전기공학부	Semiconductor and Electronic Engineering 반도체전자공학전공	○
		Electric Engineering 전기공학전공	○
	Division of Computer & Information Engineering 컴퓨터정보공학부	Computer Engineering 컴퓨터공학전공	○
		Computer Software Engineering 컴퓨터소프트웨어전공	○
		Cybersecurity 사이버보안전공	○

College	Application Unit		Freshman
College of Design and Arts 디자인예술대학	Division of Webtoon, Video and Animation* 웹툰영상애니메이션학부*	Major in Video and Animation 영상애니메이션전공	○
		Webtoon 웹툰전공	
	Division of Visual Convergence Design 시각디자인융합학부	Visual Communication Design 시각디자인전공	○
		Marketing and Service Design 서비스마케팅디자인전공	○
	Dept. of Industrial Design 산업디자인학과		○
	Dept. of Fashion Design 패션디자인학과		○
	Division of Beauty Arts 뷰티학부	Hair Design 헤어디자인전공	○
		Makeup and Skin Care 메이크업·피부전공	
	Dept. of Interior Architectural Design 실내건축디자인학과		○
	Dept. of Games 게임학과		○
College of Rehabilitation Sciences 재활과학대학	Dept. of Physical Therapy 물리치료학과		○
	Dept. of Operation Treatment 작업치료학과		○
	Dept. of Speech-Language Pathology 언어치료학과		○
	Dept. of Rehabilitation Counseling and Psychotherapy 재활상담심리치료학과		○
	Dept. of Medical Rehabilitation 의료재활학과		○
	Dept. of Rehabilitation & Health Promotion 재활건강증진학과		○
-	Division of Physical Education and Leisure 체육레저학부	Dept. of Physical Education 체육학과	○
		Dept. of Sports Leisure 스포츠레저학과	○
		Dept. of Sports Healthcare 스포츠헬스케어학과	○
-	Division of Cultural Contents 문화콘텐츠학부		○

College	Application Unit		Freshman
<sup>1)</sup> College of International Studies <sup>1)</sup> 국제대학	Division of Global Korean Studies* 글로벌한국학부*	Korean Education 한국어교육전공	○
		Korean Language Interpretation and Translation 한국어통번역전공	
	Division of Global Liberal Studies* 글로벌자유학부*		○

\*Selection of Major by Undergraduate Applicants: Determined after completing two semesters, based on the student's preferences and the school's guidelines for departmental assignment.

<sup>1)</sup>The College of International Studies is a college exclusively for international students, and admission to its affiliated divisions (majors) is open only to international applicants.

## 2) English-Medium Track

대학	모집단위명		신입학
<sup>1)</sup> College of International Studies <sup>1)</sup> 국제대학	Division of Global Service 글로벌인재학부	Global Business 글로벌경영전공	○
		Media Studies 미디어전공	○
		Agri-Industry 농산업학전공	○
		AI Computer Engineering AI컴퓨터공학전공	○
		Electronic and Electrical ICT Engineering 전자전기ICT공학전공	○
		Design and Arts 디자인예술전공	○

<sup>1)</sup>The College of International Studies is a college exclusively for international students, and admission to its affiliated divisions (majors) is open only to international applicants.

Recruiting Quota (Transfer): No limit

## 1) Korean-Medium Track

College	Application Unit		Transfer
College of Public Service 공공인재대학	Division of Public Safety 공공안전학부	Fire Service Administration 소방 행정학전공	○
		Public Service Law 공직법무전공	Unable to transfer to 3rd, 4th
	Division of Police 경찰학부	Police Administration 경찰행정학전공	○
		Self-Government Police 자치경찰학전공	○
	Dept. of Military Science 국방군사학과		○
	Dept. of Real Estate and Land Administration 부동산지적학과		○
	College of Global Business 글로벌경영대학	School of Business 경영학부	Business Administration 경영학전공
Accounting 회계학전공			○
Dept. of Economics, Finance and Trade 경제금융통상학과		○	
School of Hotel & Tourism Management* 호텔관광경영학부		Tourism & Airline Management 관광항공경영전공	○
		Hotel, Tourism & Food Service 호텔관광외식서비스전공	○
Dept. of Japanese Language & Studies 일본어일본학과		○	
Division of International Studies* 국제학부		Global Foreign Languages 국제어문학전공	○
College of Social Sciences 사회과학대학	Dept. of Social Welfare 사회복지학과		○
	Youth Counseling and Welfare 청소년상담복지학과		○
	Dept. of Child & Family Welfare 아동가정복지학과		○
	Dept. of Lifelong Education & Senior Welfare 평생교육실버복지학과		○
	Division of Media Communication 미디어커뮤니케이션학부	Visual Contents 영상콘텐츠전공	○
		Advertising Public Relation 광고PR전공	Unable to transfer to 4th
	Dept. of Library & Information Science 문헌정보학과		○
Dept. of Psychology 심리학과		○	

College	Application Unit	Transfer	
College of Health and Biology 보건바이오대학	Dept. of Health and Medical Information 보건의료학과	Unable to transfer to 4th	
	Dept. of Emergency Medical Service 응급구조학과	Unable to transfer to 4th	
	Dept. of Animal Resources 동물자원학과	○	
	Dept. of Companion Animal Industry 반려동물산업학과	○	
	Dept. of Smart Horticulture 스마트원예학과	○	
	Dept. of Food Processing 식품가공학과	○	
	Dept. of Reproductive Medicine Industry 난임의료산업학과	X	
College of IT·Engineering IT·공과대학	Dept. of Architectural Engineering 건축공학과	○	
	Dept. of Fire Safety and Disaster Prevention 소방안전방재학과	Unable to transfer to 4th	
	Division of Mechanical & Automotive Engineering 기계자동차공학부	Mechanical Engineering 기계공학전공	○
		Automotive Engineering 미래자동차공학전공	○
	Dept. of Food and Nutrition 식품영양학과	○	
	Dept. of Landscape, Forest and Garden Design 조경산림정원학과	○	
	Dept. of Eco-friendly Energy Engineering 친환경에너지학과	○	
	Division of Electronic & Electrical Engineering 전자전기공학부	Semiconductor and Electronic Engineering 반도체전자공학전공	○
		Electric Engineering 전기공학전공	○
	Division of Computer & Information Engineering 컴퓨터정보공학부	Computer Engineering 컴퓨터공학전공	○
		Computer Software Engineering 컴퓨터소프트웨어전공	○
Cybersecurity 사이버보안전공		○	

College	Application Unit		Transfer
College of Design and Arts 디자인예술대학	Division of Webtoon, Video and Animation 웹툰영상애니메이션학부	Major in Video and Animation 영상애니메이션전공	○
		Webtoon 웹툰전공	Unable to transfer to 4th
	Visual Communication Design 시각디자인융합학부	Visual Communication Design 시각디자인전공	○
		Marketing and Service Design 서비스마케팅디자인전공	○
	Dept. of Industrial Design 산업디자인학과		○
	Dept. of Fashion Design 패션디자인학과		○
	Division of Beauty Arts 뷰티학부	Hair Design 헤어디자인전공	○
		Makeup and Skin Care 메이크업·피부전공	○
	Dept. of Interior Architectural Design 실내건축디자인학과		○
	Dept. of Games 게임학과		Unable to transfer to 4th
College of Rehabilitation Sciences 재활과학대학	Dept. of Physical Therapy 물리치료학과		○
	Dept. of Operation Treatment 작업치료학과		○
	Dept. of Speech-Language Pathology 언어치료학과		○
	Dept. of Rehabilitation Counseling and Psychotherapy 재활상담심리치료학과		○
	Dept. of Medical Rehabilitation 의료재활학과		○
	Dept. of Rehabilitation & Health Promotion 재활건강증진학과		○
-	Division of Sports & Leisure 체육레저학부	Dept. of Physical Education 체육학과	○
		Dept. of Sports and Leisure 스포츠레저학과	○
		Dept. of Sports Healthcare 스포츠헬스케어학과	Unable to transfer to 3rd, 4th
-	Division of Cultural Contents 문화콘텐츠학부		○
College of International Studies 국제대학	Division of Global Korean Studies 글로벌한국학부	Korean Education 한국어교육전공	○
		Korean Language Interpretation and Translation 한국어통번역전공	○

<sup>1)</sup>The College of International Studies is exclusively dedicated to international students, and all departments under it are open only to foreign applicants.

## 2) English-Medium Track

College	Application Unit		Admission Year
<sup>1)</sup> College of International Studies <sup>1)</sup> 국제대학	Division of Service 글로벌인재학부	Global Business 글로벌경영전공	2 <sup>nd</sup> , 3 <sup>rd</sup>
		Media Studies 미디어전공	2 <sup>nd</sup> , 3 <sup>rd</sup>
		Agri-Industry 농산업학전공	2 <sup>nd</sup> , 3 <sup>rd</sup>
		AI Computer Engineering AI컴퓨터공학전공	2 <sup>nd</sup> , 3 <sup>rd</sup>
		Electronic and Electrical ICT Engineering 전자전기ICT공학전공	2 <sup>nd</sup> , 3 <sup>rd</sup>
		Design and Arts 디자인예술전공	2 <sup>nd</sup> , 3 <sup>rd</sup>

<sup>1)</sup>The College of International Studies is a college exclusively for international students, and admission to its affiliated divisions (majors) is open only to international applicants.

## 2) Chinese-Medium Track

College	Application Unit		Transfer year
College of Global Business 글로벌경영대학	School of Hotel & Tourism Management 호텔관광경영학부	Tourism & Airline Management 관광항공경영전공	3 <sup>rd</sup> , 4 <sup>th</sup>
		Hotel, Tourism & Food Service 호텔관광외식서비스전공	4 <sup>th</sup>
College of Health and Biology 보건바이오대학	Dept. of Smart Horticulture 스마트원예학과		4 <sup>th</sup>
College of IT·Engineering IT·공과대학	Dept. of Landscape, Forest and Garden Design 조경산림정원학과		4 <sup>th</sup>
	Dept. of Eco-friendly Energy Engineering 친환경에너지학과		3 <sup>rd</sup> , 4 <sup>th</sup>
	Division of Electronic & Electrical Engineering 전자전기공학부	Information and Communication Technology Engineering 정보통신공학전공	4 <sup>th</sup>
		Semiconductor and Electronic Engineering 반도체전자공학전공	4 <sup>th</sup>
		Electric Engineering 전기공학전공	4 <sup>th</sup>

College	Application Unit		Transfer year
College of Education 사범대학	Department of Early Childhood Education 유아교육과*		4 <sup>th</sup>
College of Rehabilitation Sciences 재활과학대학	Dept. of Physical Therapy 물리치료학과		4 <sup>th</sup>
	Dept. of Medical Rehabilitation 의료재활학과		4 <sup>th</sup>
-	Division of Sports & Leisure 체육레저학부	Dept. of Sports and Leisure 스포츠레저학과	3 <sup>rd</sup> , 4 <sup>th</sup>
1)College of International Studies 1)국제대학	Division of Service* 글로벌인재학부*	Global International Economics and Trade 국제경제무역전공	3 <sup>rd</sup> , 4 <sup>th</sup>
		Global Management 글로벌경영전공	3 <sup>rd</sup> , 4 <sup>th</sup>
		Global Cultural Industry Management 문화산업관리전공	3 <sup>rd</sup> , 4 <sup>th</sup>
		Global Talent Education 인재교육전공	3 <sup>rd</sup> , 4 <sup>th</sup>
		Global Law 법학전공	3 <sup>rd</sup> , 4 <sup>th</sup>
		Global Theater, Film, and Literature 연극영화문학전공	3 <sup>rd</sup> , 4 <sup>th</sup>
		Global Chinese Language and Literature 중국언어문학전공	2 <sup>nd</sup> , 3 <sup>rd</sup> , 4 <sup>th</sup>
		Global Accounting 회계학전공	3 <sup>rd</sup> , 4 <sup>th</sup>
		Global AI Computer Engineering AI컴퓨터공학전공	3 <sup>rd</sup> , 4 <sup>th</sup>
		Global Architectural Engineering 건축공학전공	3 <sup>rd</sup> , 4 <sup>th</sup>
		Global Mechanical Engineering 기계공학전공	3 <sup>rd</sup> , 4 <sup>th</sup>
		Global Electronic, Electrical and ICT Engineering 전자전기ICT공학전공	3 <sup>rd</sup> , 4 <sup>th</sup>
Global Design Arts 디자인예술전공	3 <sup>rd</sup> , 4 <sup>th</sup>		

\*Fourth-year transfer students in the Department of Early Childhood Education, College of Education, are not eligible to complete the teacher training curriculum.

<sup>1)</sup>The College of International Studies is exclusively dedicated to international students, and all departments under it are open only to foreign applicants.

## 2. Application Eligibility

### □ Application Eligibility

Category	Both Parents are Foreign Nationals	Foreign Nationals Who Completed Entire Education Abroad
Common	<ul style="list-style-type: none"> <li>· If both parents and the applicant are all foreign nationals and the applicant has acquired foreign nationality after birth (e.g., acquiring foreign nationality after birth through naturalization, etc.)</li> <li>· Applicants must have completed elementary, middle, and high school either in a foreign country or in a school established in Korea for foreigners</li> </ul>	<ul style="list-style-type: none"> <li>· Applicants are not eligible if they have attended any part of the elementary or secondary education in a domestic (Korean) school, even if for a short period</li> <li>· Applicants who have completed their entire education in a country where the elementary and secondary education system is less than 12 years are eligible</li> </ul>
	※ If the applicant holds dual nationality (Korean nationality and a foreign nationality), they are not eligible to apply	
Freshman Admission	1. Applicants who have graduated (or are expected to graduate) from high school or have been recognized as having an equivalent or higher level of education 2. Differences in educational systems between countries are acknowledged	
Transfer to 2nd year	An applicant with a certificate of completion of at least 1 years (2 semesters) at four-year or the equivalent, or with a 2 year (or 3 year) college diploma (expected)	
Transfer to 3rd year	An applicant with a certificate of completion of at least 2 years (4 semesters) at four-year or the equivalent, or with a 2 year (or 3 year) college diploma (expected)	
Transfer to 4th year	An applicant with a three-year college diploma (expected)	

※ Homeschooling, online/distance learning, adult/lifelong education, and GED are not accepted for new admissions.

□ Language Proficiency Criteria

1) Applicants for Freshman and Transfer Admission (Korean-Medium Track) must meet at least one of the following Korean language proficiency criteria.

Category	Organization	Criteria	Validation Period
TOPIK(PBT/ IBT) <sup>(1)</sup>	NIIED	Level 3 or above (Arts & Physical Education majors: Level 2 or above)	Must be valid on the application date
DU TOPIK (Daegu University Korean Language Proficiency Test)	Daegu University <sup>(2)</sup>	Those who have passed	Must be valid on the application date <b>※Valid until 2 years from the time of test result announcement</b>
Daegu University Korean Language Education Center	-	Those who have completed level 3 or above	Applicants who have completed Level 3 or higher of the regular program as of the application date are eligible
Sejong institute	Sejong Institute Foundation	Those who have completed Intermediate Level 1 or higher	Must be valid on the application date
Social Integration Program	Ministry of Justice	Those who have completed level 3 or above. Those who achieved 61 or higher from the pre-test.	Must be valid on the application date

<sup>(1)</sup> If the applicants are applying under the agreement between Daegu University and their home institution, the requirement of Korean proficiency can be different.

<sup>(2)</sup> If the applicants who live outside of Korea are able to take the DU TOPIK(Overseas), They will be guided to take the test in one of DU's sister universities (organizations).

※ However, applicants for freshman or transfer admission to the Division of Global Korean Studies (International Korean Education Major and Korean Interpretation and Translation Major) may apply even without a Korean-language proficiency test score.

2) Applicants for the Chinese Track must hold Chinese nationality along with both parents, and their native language must be Standard Chinese (现代标准汉语).

3) Applicants for the English Track must have an IELTS score of 5.5 or higher, or a TOEFL iBT score of 3.5 or higher (59 or higher under the previous TOEFL iBT scoring system).

### 3. Admission Schedule & Process

Common Information

- 1) The first, second, and third round of freshman and transfer admissions will be conducted simultaneously, and all schedules are based on **Korean Standard Time (KST)**.
- 2) All documents must be submitted by the deadline, and any documents submitted after the deadline will not be accepted.
- 3) The admission results **will be posted on the online application website**, and **applicants must check the results themselves**.
- 4) **Final enrollment is only confirmed after tuition payment has been completed via a virtual account before the deadline.**

Admission Schedule

Category	2nd Round	3rd Round
Online Application & Document Submission	2026. 6. 11.(Thu)~ 6. 19.(Fri) 17:00	2026. 7. 23.(Thu)~ 8. 3.(Mon) 17:00
DU TOPIK Test in Korea (For applicable students)	2026. 6. 23.(Tue) 14:00 ※ Venue: Room 1201, Building 5, College of Design and Arts	N/A
Submission of Additional Documents	2026. 6. 23.(Tue) 17:00	N/A
Admission Results Announcement	2026. 7. 9.(Thu)	2026. 8. 18.(Tue)
Tuition Payment & Enrollment	2026. 7. 9.(Thu) ~7. 20.(Mon)	2026. 8. 18.(Tue) ~8. 24.(Mon)
Issuance of Certificate of Admission	After 2026. 7. 27.(Mon)	After 2026. 8. 25.(Tue)
Orientation	2026. 8. 28.(Fri) 14:00, Detailed schedule will be announced later via the registered email address.	
Semester Start	2026. 9. 1.(Tue)	

**Application Fee: 100,000 KRW**

- 1) Payment Deadline: Within the online application period of the respective admission round.
- 2) If the application fee is not paid to the account below within the payment deadline, the application will be automatically canceled.
- 3) After making the payment to the account below, **the payment receipt (or confirmation) must be submitted along with the admission application.**

<b>Bank Name</b>	iM Bank(Daegu Bank)
<b>Account No.</b>	207-04-000059-2
<b>Account Holder</b>	대구대학교(Daegu University)
<b>Note</b>	Transfer the payment using the applicant's name

4) Information about Application Fee refunds

(1) Refund Conditions

- ▷ A full amount of the application fee can be refunded only if an [Application Cancellation and Application Fee Refund Request Form] is submitted within the application period.
- ▷ When admission process is impossible after the application period due to natural disasters or other accidents, a refund of the application fee may be possible after screening and review by the University. In these cases, students must submit an [Application Cancellation and Application Fee Refund Request Form] as well as related [Evidential Documents].
- ▷ When the University cannot proceed with admission process due to its own responsibility, the application fee will be fully refunded.

(2) Refund Method: The application fee can be transferred to the applicant's bank account, or applicants can receive a refund by visiting the university directly.

(3) Other

- ▷ Upon encountering reasons for a refund of the application fee, applicants shall expedite the procedure of refund request and provide their bank account information for the refund.
- ▷ When the application fee is refunded, any bank transfer fees shall be borne by the applicant.
- ▷ Other application fee refund matters that are not specified in the guideline shall follow the "Higher Education Act" and be left to the discretion of Daegu University.

**DU TOPIK Test Fee in Korea: 50,000 KRW (Only for applicable applicants)**

- The payment deadline and method are the same as those for the application fee.

**Evaluation Factors**

Application Unit	Selection Method	Evaluation Ratio (%)	Full Score
All Units	Document Screening	100	100

- Document Screening: The Document Screening Committee evaluates the eligibility, completeness of

submitted documents, and overall academic capability of the applicant. Students who score 60 points or higher (out of 100) will be selected.

- Point deduction: Applicants who have attended a high school in Korea may receive point deductions based on records of school violence.

1~2 Level	3 Level	4 Level	5 Level	6 Level	7 Level	8~9 Level
-1 point	-2 points	-3 points	-5 points	-7 points	-9 points	-10 points

Application Procedure

①	Access the online application site ( <a href="https://intl.daegu.ac.kr">https://intl.daegu.ac.kr</a> )
②	Create an ID and log in
③	Check the application guidelines and admission requirements
④	Fill out the application form and save
⑤	Review and finalize the entered information
⑥	Attach a photo to the printed application form and official transcript
⑦	Pay the application fee and DU TOPIK test fee (for applicable applicants only)
⑧	Submit the application form and all required documents within the submission period to the Office of International Affairs either by mail or in person

## 4. Required Documents

Submission Documents		Fresh man	Transfer
①	One original set of <b>all application documents submitted online</b> ※ After completing the documents online, print them (1 copy each of the application form, statement of purpose, and consent form for academic verification).	0	0
②	▷ <b>For Freshman and Transfer Admission (Korean-Medium Track): Choose one from the following:</b> - TOPIK (Test of Proficiency in Korean) score certificate - Certificate of completion for Level 3 or higher from Daegu University Korean Language Education Center - Daegu University Korean Language Proficiency Test (DU TOPIK) passing certificate - Application form for DU TOPIK (domestic) - Certificate of completion from Sejong Institute - Certificate of education completion or pre-evaluation score report from the Social Integration Program ▷ <b>Freshman / Transfer Admission (English Track): IELTS 5.5 or higher, or TOEFL iBT 3.5 or higher (old: 59 or higher)</b> ▷ <b>For Transfer Admission (Chinese-Medium Track): Copy of local ID card,</b> ※ <b>Submit language proficiency certificate if applicable</b>	0	0
③	One copy of the <b>applicant's (international) passport</b>	0	0
④	One copy of the <b>applicant's Alien Registration Card (front and back)</b> ※ Only for those who hold an Alien Registration Card (Applicants not residing in Korea are not required to submit it).	0	0
⑤	One copy each of the <b>father's and mother's (international) passport,</b> ※ If a passport is not available, a government-issued ID card from the home country can be submitted.	0	0
⑥	One original copy of a <b>family (kinship) relationship certificate or birth certificate</b> (with a certified translation) ※ Applicants with Chinese nationality may submit a copy of the “户口本” (if the applicant and parents are not separated on the 户口本).	0	0
⑦	One original copy of a <b>bank balance certificate</b> ▷ Must be in the name of the applicant or their parent, with a balance of at least KRW 16,000,000. ※ <u>The certificate must be issued within 30 days from the document submission date.</u> However, if the certificate specifies a validity period, it will only be accepted if issued within 6 months of the submission date, and the validity must extend beyond the admission date (March 1, 2025). ※ If the applicant is currently enrolled at our university (e.g., language student, exchange student), a bank balance certificate with at least KRW 8,000,000 deposited for one month from a domestic bank can be submitted. ※ Applicants currently residing in Korea must submit a bank balance certificate from a domestic bank, issued within 3 months of the application submission date.	0	0

Submission Documents		Fresh man	Transfer
⑧	One original copy of the <b>high school graduation (or expected graduation) certificate<sup>1)</sup></b> ▷ Academic certification documents must be either Apostilled or verified by the consulate *For some applicants: Transfer applicants who have completed more than two years of a bachelor's degree program (domestic or international) are required to submit this document.	O	*For some applicants
⑨	One original copy of the <b>high school transcript (covering all grades)</b> *For some applicants: Those who have attended a high school in Korea must submit a student record.	O	X
⑩	One original copy of the <b>university academic certificate (graduation, expected graduation, or completion)<sup>2)</sup></b> ▷ Academic certification documents must be either Apostilled or verified by the consulate	X	O
⑪	One original copy of the <b>university transcript (covering all grades)</b> * It must indicate credits per course and percentage grades (or submit additional documents).	X	O

**※ Important Notes Regarding Submission of Application Documents**

- ▶ All documents can be submitted as copies (however, only those issued within 6 months of the application date will be accepted. Original documents or certified copies must be submitted or verified before the issuance of the Certificate of Admission).
- ▶ Documents submitted in languages other than Korean, English, or Chinese must be accompanied by a Korean or English translation for verification and review.
- ▶ Applicants who have completed their entire education abroad must provide proof of all academic history, including elementary, middle, and high school.
- ▶ Documents numbered ⑧ to ⑪ will not be returned. / Documents required for visa issuance or status change must be prepared individually by the applicant.
- ▶ Applicants who submit certificates of expected graduation or enrollment must submit their final academic certificates and transcripts after the announcement of successful candidates.
- ▶ For items noted as 1) and 2), Chinese nationals may submit an original graduation certificate issued by the China Ministry of Education's academic recognition certificate issuance site (<http://www.cdgc.edu.cn> or <http://www.chsi.com.cn>).

## 5. Tuition Information

### Freshman and Transfer Students

Track	Application Unit	Tuition(KRW)
Humanities & Social Sciences	Fire Service Administration, Public Service Law, Police Administration, Self-Governing Police Administration, Dept. of Military Science, Dept. of Real Estate and Land Administration, Law, School of Business, Business Administration, Accounting, Dept. of Economics, Finance and Trade, School of Hotel & Tourism Management, Tourism & Airline Management, Hotel, Tourism, Food Service, Dept. of Japanese Language & Studies, Division of International Studies, Korean Language Education, Korean Interpretation and Translation(KIT), International Korean Education, Dept. of Social Welfare, Dept. of Youth Counseling and Welfare, Dept. of Child & Family Welfare, Dept. of Lifelong Education & Senior Welfare, <a href="#">Division of Media Communication (Freshman Admission and 2nd-Year Transfer Admission)</a> , Dept. of Library & Information Science, Dept. of Psychology, Division of Cultural Contents, Division of Global Korean Studies, Division of Global Service (Major in Global Business, Major in Media), Division of Global Liberal Studies	3,772,000
Health and Physical Sciences	Dept. of Health and Medical Sciences, Dept. of Animal Resources, Dept. of Companion Animal Industry, Dept. of Smart Horticulture, Dept. of Physical Therapy, Dept. of Occupational Therapy, Dept. of Speech-Language Pathology, Dept. of Rehabilitation Counseling and Psychotherapy, Dept. of Medical Rehabilitation, Dept. of Rehabilitation and Health Promotion, Dept. of Nursing, Dept. of Physical Education, Dept. of Sports and Leisure, Dept. of Sports Healthcare, Division of Global Service (Major in Agro-Industry)	4,834,000
Engineering	Dept. of Emergency Medical Service, Dept. of Food Processing, Dept. of Architectural Engineering, Dept. of Fire Safety and Disaster Prevention, Division of Mechanical and Automotive Engineering, Major in Mechanical Engineering, Major in Future Automotive Engineering, Dept. of Food and Nutrition, Dept. of Landscape, Forest and Garden Design, Dept. of Eco-friendly Energy, Major in Semiconductor and Electronic Engineering, Major in Electrical Engineering, Major in Computer Engineering, Major in Computer Software Engineering, Cybersecurity, Division of Global Service (Major in AI Computer Engineering, Major in Electronic, Electrical and ICT Engineering)	5,185,000

Track	Application Unit	Tuition(KRW)
Arts	Division of Webtoon, Video and Animation, Major in Video and Animation, Major in Webtoon, Major in Visual Communication Design, Major in Service Marketing Design, Dept. of Industrial Design, Dept. of Fashion Design, Division of Beauty Arts, Division of Beauty, Major in Hair Design, Major in Makeup and Skin Care, Dept. of Interior Architectural Design, Dept. of Game Studies, Division of Global Service (Major in Design Arts)	5,502,000
Media Communication (* Transfer Admission, 3rd-4th Year)	Visual Contents, Advertising Public Relation	4,136,000

Transfer Students for the Bilingual Program

Track	Application Unit	Tuition(KRW)
Humanities & Social Sciences	School of Hotel & Tourism Management (Major in Tourism & Airline Management, Major in Hotel, Tourism and Food Service), Division of Global Service (Major in International Economics and Trade, Major in Global Management, Major in Cultural Industry Management, Major in Talent Education, Major in Law, Major in Theater, Film, and Literature, Major in Chinese Language and Literature, Major in Accounting)	3,954,000
Health and Physical Sciences	Dept. of Smart Horticulture, Dept. of Physical Therapy, Dept. of Medical Rehabilitation, Division of Physical Education and Leisure (Dept. of Sports Leisure)	5,069,000
Engineering	Dept. of Landscape Architecture, Forestry and Garden Design, Dept. of Eco-friendly Energy Engineering, Division of Electronics and Electrical Engineering (Major in Information and Communication Engineering, Major in Semiconductor and Electronic Engineering, Major in Electrical Engineering), Division of Global Service (Major in AI Computer Engineering, Major in Architectural Engineering, Major in Mechanical Engineering, Major in Electronic, Electrical and ICT Engineering)	5,437,000
Arts	Division of Global Service (Major in Design Arts)	5,770,000

## 6. Scholarship Information

※ Scholarship programs are subject to change based on future revisions to Daegu University's scholarship policies

### International Student Scholarship

Category	Scholarship Type	Recipients	Scholarship Amount	Eligibility Criteria
Freshman	TOPIK Score	TOPIK Level 6 Holders	100% tuition for the first 8 semesters after admission	<ul style="list-style-type: none"> <li>* Excludes applicants with Korean nationality or graduates of domestic high schools.</li> <li>* Students who take at least 12 credits each semester and maintain a GPA of 3.50 or higher without any failing grades.</li> <li>* Scholarship for the second semester is granted to students who have completed at least 12 credits in the previous semester and maintained a GPA of 3.50 or higher without any failing grades.</li> </ul>
		TOPIK Level 5 Holders	100% tuition for the first 4 semesters after admission	
		TOPIK Level 4 Holders	100% tuition for the first 2 semesters after admission	
		TOPIK Level 3 Holders	100% tuition for the first semester after admission	
	Korean Language Education Center Course & TOPIK(DU-TOPIK)	Completed the Center's Level 3-6 Regular Course	50% tuition for the first semester after admission	* Graduate of the Regular Program at our University's Korean Language Education Center
		DU-TOPIK Passers TOPIK Level 2 Holders	40% tuition for the first semester after admission	* Applicable only to freshmen in the Arts and Physical Education Track
English Proficiency (For English-taught majors in the College of International Studies)	IELTS 6.5 / TOEFL iBT 4.5+ (Old score: 86+)	100% tuition for the first semester		
	IELTS 5.5 / TOEFL iBT 3.5+ (Old score: 59+)	70% tuition for the first semester		
Transfer (2nd & 3rd Year)	TOPIK Score	TOPIK Level 6 Holders	100% tuition for the first 2 semesters after admission	<ul style="list-style-type: none"> <li>* Excludes applicants with Korean nationality or graduates of domestic high schools.</li> <li>* Students who take at least 12 credits each semester and maintain a GPA of 3.50 or higher without any failing grades.</li> </ul>
		TOPIK Level 4-5 Holders	100% tuition for the first semester after admission	
	Korean Language Education Center Course & TOPIK(DU-TOPIK)	TOPIK Level 3 Holders	50% tuition for the first semester after admission	
		Completed the Center's Level 3-6 Regular Course	40% tuition for the first semester after admission	* Graduate of the Regular Program at our University's Korean Language Education Center
		DU-TOPIK Passers TOPIK Level 2 Holders	30% tuition for the first semester after admission	* Applicable only to transfer students in the Arts and Physical Education Track

Category	Scholarship Type	Recipients	Scholarship Amount	Eligibility Criteria
	English Proficiency (For English-taught majors in the College of International Studies)	IELTS 6.5 / TOEFL iBT 4.5+ (Old score: 86+)	70% tuition for the first semester	
		IELTS 5.5 / TOEFL iBT 3.5+ (Old score: 59+)	50% tuition for the first semester	

- \* Sejong institute Lv.3, Social Integration Program Lv.3 Certificate or Pre-test score 61 or higher are equal to TOPIK 3
- \* Sejong institute Lv4, Social Integration Program Lv.4 Certificate or Pre-test score 81 or higher are equal to TOPIK 4
- \* International students from native English-speaking countries admitted to English-track programs in the International College shall receive the scholarship equivalent to IELTS 5.5 / TOEFL iBT 3.5+ (Old score: 59+).
- \* If you are a recipient of an external scholarship from domestic or international institutions, please inquire separately

### Scholarship for high GPA

Criteria	Sortation	GPA	Rates	Note
International Student (12 Minimum Credits in the last semester)	Excellent grades	4.2 ~ 4.5	100% of tuition fees	* Available from 2nd semester * Exclude 4th year transfer
		4.0 ~ 4.19	70% of tuition fees	
		3.0 ~ 3.99	50% of tuition fees	
	Recommend	2.5 ~ 2.99	30% of tuition fees	

### TOPIK scholarship for International Students (exclude freshman)

Requirement	Year	Scholarship	Note
TOPIK Lv. 4	1	400,000 KRW	* Based on the submission date of grades obtained after admission
	2	200,000 KRW	* Excludes those who obtained a Level 4 or higher score at the time of admission and those who obtained scores after the 4th year.
	3	100,000 KRW	

## 7. Dormitory Information

Category		1 Semester (4 months)	Summer/Winter Break (2 months)	Note
International House	Twin room	915,000 KRW	412,500 KRW	Individual shower room(bath room), Air conditioning and heating, elevator, Simple Kitchen
Biho Dormitory	Twin room	793,000 KRW	357,500 KRW	Shower room(bathroom), Air conditioning and heating

- \* The room assignment is managed by the dormitory administration office and dormitory fees are subject to change depending on price increases.
- \* The above amount is the dormitory maintenance fee for the 2026 academic year, and meal expenses are not included.

## 8. Notes for Applicants

- Successful applicants from the 1st round of the 2026 Spring Semester (March Admission) Special Admission for International Students cannot apply for the 2nd and 3rd rounds, and those who pass the 2nd round are not eligible to apply for the 3rd round.
- Application Method
  - 1) Application Submission (Online): Application website / <https://intl.daegu.ac.kr>
  - 2) Document Submission: After completing the online application, submit the required documents either by mail or in person (Office of International Affairs, Daegu University).
- ※ **Be sure to thoroughly review the admission guidelines and important notes (the applicant is responsible for any issues arising from failure to review them).**
- Current undergraduate students of Daegu University are not allowed to reapply for admission through the special admission for international students.**
- All information in the submitted documents must be filled out completely and accurately. Once the documents are submitted, no changes or corrections can be made. Applicants are responsible for any disadvantages caused by errors or omissions in the application form and submitted documents. No changes or cancellations can be made to the submitted information.
- If it is found that a candidate has been admitted through fraudulent means, such as submitting forged or altered documents, the admission will be canceled.
- Admission will be canceled if a candidate is found to have enrolled in two or more universities at the same time.
- If the applicant's contact information (address and phone number) is incorrectly provided on the application form or if the university cannot reach the applicant due to failure in communication, resulting in missed notifications and cancellation of admission, the applicant is solely responsible.
- Even if an applicant passes the admission process and completes registration, the admission will be canceled if the relevant authorities refuse to issue a visa or if the applicant is unable to enter the country.
- If an applicant submitted a certificate of expected graduation at the time of application but fails to submit the official graduation certificate before enrollment, the admission will be canceled.
- Submitted documents will not be returned (however, considering the characteristics of certain countries, some documents such as original graduation certificates may be returned after the admission process).
- Applicants who are scheduled to receive a scholarship from their home government, organization, or any external institution must submit a certificate from the scholarship provider confirming the coverage of tuition fees during the study period (scholarship certificate).
- Applicants are responsible for confirming the visa application or change process and matters regarding the transfer of schools.
- Matters not specified in the admission guidelines will be conducted in accordance with the Basic Regulations for University Admissions by the Ministry of Education.

## 9. Notes for Successful Applicants

- All applicants must be covered by the university's insurances.
- After paying for the tuition, you must apply or change for a student visa, and after applying or changing, please submit the application confirmation form (university form) to the office of international affairs. Students are responsible for any disadvantages for not applying or changing for visas by deadlines.

## 10. Contact Information

- Address: Office of International Affairs, Daegu University Jillyang, Daegudae-ro 201, Gyeongsan, Gyeongbuk, South Korea (Design and Arts Building 5, #1202)
- Contact information: Tel. +82-53-850-5696, 5683~5687  
 Fax. +82-53-850-5699  
 Email: oia@daegu.ac.kr

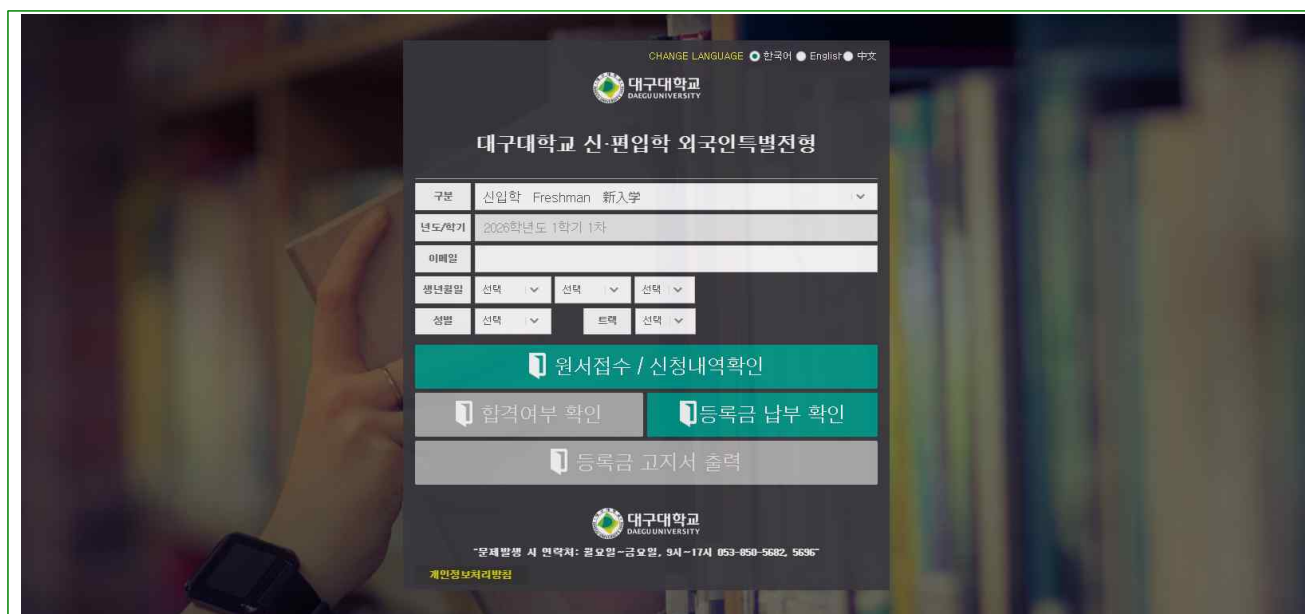
### Location Guide for the Office of International Affairs, International Team

- Website link: <https://www.daegu.ac.kr/page/54>



**II**
**Other Information on the International Special Admission**
**11. Online Application Manual**

- Visit the online application website(<https://intl.daegu.ac.kr>) and proceed with the online application by referring to the Online Application Manual located at the top left of the screen.



- Link to Online Admission Application(QR Code)



**[Attachment 1]**
**[Apostille Certificate Guide]**

1. Apostille Convention: Multilateral convention that authorizes a country issuing an official document to certify the document, eliminating the need for complex certification procedures including legalization by the consul in the country of sojourn, thus facilitating the international use of official documents between signatories.
2. Documents subject to system: Foreign government-issued and notarized document
  - A. Documents emanating from the State or local governments: Family relation certificates, academic transcripts issued by public schools, etc.
  - B. Notarial documents: Certificates issued by private schools, medical certificates, documents issued by companies and banks, etc.

※ Limited to countries that are parties to the Apostille Convention (For countries not party to the convention, submission of certification documents issued by the Korean consulate in the host country or the foreign embassy in Korea)
3. Issuing Procedures: For various certificates issued by foreign schools, etc., an Apostille Certificate must be applied for and obtained from the government agency designated by the country where the school is located. (www.hcch.net)
4. Signatories Status(Refer to [https://www.0404.go.kr/consulate/consul\\_apo.jsp](https://www.0404.go.kr/consulate/consul_apo.jsp))

Region	Member countries
Asia, Oceania	New Zealand, Niue, Marshall Islands, Mauritius, Mongolia, Vanuatu, Brunei, Samoa, Singapore, Australia, India, Indonesia, Japan, China (including Macau and Hong Kong), Cook Islands, Tajikistan, Tonga, Pakistan, Palau, Fiji, Philippines, South Korea
Europe	Greece, Netherlands, Norway, Denmark, Germany, Latvia, Russia, Romania, Luxembourg, Lithuania, Liechtenstein, North Macedonia, Monaco, Montenegro, Moldova, Malta, Belgium, Belarus, Bosnia and Herzegovina, Bulgaria, San Marino, Serbia, Sweden, Switzerland, Spain, Slovakia, Slovenia, Armenia, Iceland, Ireland, Azerbaijan, Andorra, Albania, Estonia, United Kingdom, Austria, Uzbekistan, Ukraine, Italy, Georgia, Czech Republic, Kazakhstan, Kosovo, Croatia, Kyrgyzstan, Cyprus, Turkey, Portugal, Poland, France, Finland, Hungary
North America	United States (including Guam, Mariana Islands, Saipan, and Puerto Rico), Canada
Latin America	Guyana, Guatemala, Grenada, Nicaragua, Dominican Republic, Dominica, Mexico, Barbados, Bahamas, Venezuela, Belize, Bolivia, Brazil, Saint Lucia, Saint Vincent, Saint Kitts and Nevis, Suriname, Argentina, Antigua and Barbuda, Ecuador, El Salvador, Honduras, Uruguay, Chile, Costa Rica, Colombia, Trinidad and Tobago, Panama, Peru, Paraguay, Jamaica
Africa	Namibia, South Africa, Liberia, Lesotho, Malawi, Botswana, Sao Tome and Principe, Senegal, Seychelles, Eswatini, Cape Verde, Burundi, Tunisia
Middle East	Morocco, Bahrain, Saudi Arabia, Oman, Israel

## [Appendix 1] Guide to Application Documents(Vietnamese/ Tiếng Việt)

### Hồ sơ ứng tuyển

Hồ sơ ứng tuyển		Năm 1	Chuyển tiếp
①	<b>Đơn đăng ký trực tuyến</b> 1 bản gốc ※ Điền đơn online trên link trường (internet) và in đơn ra (đơn đăng ký nhập học, động lực, mục đích lựa chọn chuyên ngành và mẫu chấp thuận xác minh lý lịch học tập)	0	0
②	<b>Chứng chỉ năng lực tiếng</b> 1 bản gốc ▷ <b>Tuyểnsinhnăm1, sinh viên chuyển tiếp(tiếng Hàn): Chọn một trong các mục bên dưới</b> - Chứng chỉ năng lực tiếng hàn TOPIK - Chứng nhận hoàn thành lớp tiếng Hàn tại trường Daegu từ lớp 3 trở lên - Giấy báo đỗ kỳ thi năng lực tiếng Hàn tại trường Daegu (DU TOPIK) - Giấy đăng ký dự thi thi năng lực tiếng Hàn tại trường Daegu (các bạn cư trú tại Hàn) - Chứng chỉ tiếng Hàn Sejong (세종학당 한국어 수료증명서) - Xác nhận đã hoàn thành khóa đào tạo chương trình hòa nhập xã hội và bảng điểm ▷ <b>Tuyển sinh năm 1, sinh viên chuyển tiếp(Chương trình tiếng Anh): Yêu cầu nộp chứng chỉ tiếng Anh với điểm IELTS từ 5.5 trở lên hoặc TOEFL iBT từ 3.5 trở lên.</b> ▷ <b>Tuyển sinh năm 1, Sinh viên chuyển tiếp (tiếng Trung): Bản sao chứng minh thư ※Chứng nhận ngoại ngữ (nếu có)</b>	0	0
③	<b>Hộ chiếu (sinh viên ngoại quốc)</b> 1 bản sao	0	0
④	<b>Thẻ ngoại kiều (mặt trước và mặt sau thẻ)</b> 1 bản sao ※ Chỉ nộp nếu có thẻ ngoại kiều (người nộp đơn không cư trú tại Hàn Quốc không cần nộp)	0	0
⑤	<b>Hộ chiếu của phụ huynh</b> mỗi người 1 bản sao, ※ Trong trường hợp phụ huynh không có hộ chiếu, có thể thay thế bằng thẻ căn cước công dân	0	0
⑥	<b>Giấy khai sinh hoặc Giấy chứng minh quan hệ gia đình</b> (dịch thuật công chứng) 1 bản ※ Người nộp đơn mang quốc tịch Trung Quốc có thể nộp bản sao sổ hộ khẩu	0	0
⑦	<b>Giấy chứng minh tài chính</b> 1 bản gốc ▷ 16.000.000 KRW trở lên (giấy đứng tên người nộp đơn hoặc phụ huynh) ※ <b>Giấy chứng nhận phải được cấp trong vòng 30 ngày kể từ thời điểm nộp hồ sơ.</b> Tuy nhiên, thời hạn sử dụng của giấy tối đa là 6 tháng kể từ ngày cấp và đối với các sinh viên nhập học đợt 2-3, giấy sẽ hết hạn sau ngày nhập học (dự kiến vào ngày 1/9/2026). ※ Nếu người nộp đơn là học sinh (hệ tiếng, sinh viên trao đổi, v.v.) hiện đang theo học tại trường Đại học Daegu, có thể nộp giấy chứng nhận số dư từ ngân hàng trong nước với số tiền từ 8.000.000 KRW trở lên (thời hạn 1 tháng kể từ ngày cấp) ※ Những người cư trú tại Hàn Quốc có thể nộp giấy chứng nhận số dư từ ngân hàng trong nước (thời hạn 3 tháng kể từ ngày nộp đơn)	0	0
⑧	<b>Giấy chứng nhận tốt nghiệp THPT (dự kiến tốt nghiệp ) (Lưu ý 1)</b> 1 bản Dịch thuật công chứng ▷ xác nhận của Apostille hoặc của Đại sứ - Lãnh sự quán *Lưu ý: Sinh viên chuyển tiếp từ năm 3 phải hoàn thành ít nhất 2 năm chương trình Cử nhân Đại học 4 năm trong nước	0	*Lưu ý
⑨	<b>Bảng điểm Trung học Phổ thông</b> 1 bản Dịch thuật công chứng Đại sứ/ Lãnh sự quán *Lưu ý: Người đã từng theo học tại trường trung học phổ thông ở Hàn Quốc phải nộp Học bạ	0	X
⑩	<b>Bằng tốt nghiệp Đại học (dự kiến tốt nghiệp) (Lưu ý 2)</b> 1 bản Dịch thuật công chứng ▷ xác nhận của Apostille hoặc của Đại sứ - Lãnh sự quán	X	0
⑪	<b>Bảng điểm Đại học</b> 1 bản Dịch thuật công chứng ※ Yêu cầu phải có tín chỉ và điểm phần trăm cho từng môn học (hoặc phải nộp thêm tài liệu)	X	0

### ※ Những lưu ý khi nộp hồ sơ đăng ký

- ▶ Có thể nộp bản sao của tất cả các giấy tờ (tiếng Hàn hoặc tiếng Anh.). Tuy nhiên, chỉ chấp nhận các giấy tờ được cấp trong vòng 6 tháng kể từ ngày nộp đơn và phải nộp bản gốc trước ngày được cấp giấy chứng nhận nhập học.
- ▶ Sinh viên ngoại quốc (ba hoặc mẹ là người Hàn) đã hoàn thành chương trình giáo dục ở nước ngoài phải nộp chứng minh trình độ học vấn, bao gồm bậc Tiểu học, Trung học Cơ sở và Trung học Phổ thông.
- ▶ ⑧~⑪ Hồ sơ đã nộp sẽ không được trả lại / Người nộp đơn phải tự chuẩn bị thêm hồ sơ cần thiết để xin thị thực (visa)
- ▶ Những sinh viên đã nộp giấy chứng nhận sinh viên và giấy dự kiến tốt nghiệp, sau khi có kết quả báo đỗ, vui lòng bổ sung thêm Giấy chứng nhận học lực và Bảng điểm.
- ▶ **Lưu ý 1), 2):** Sinh viên Trung Quốc có thể nộp giấy chứng nhận tốt nghiệp gốc do trang web của Bộ Giáo dục Trung Quốc cấp (<http://www.cdgc.edu.cn> hoặc <http://www.chsi.com> )

## [Appendix 2] Guide to Application Documents(Uzbek/ o'zbek)

### □ Ariza hujjatlari

Taqdim etish zarur bo'lgan hujjatlar		Yangi talaba	O'qishni ko'chirayotgan talaba
①	<b>Onlayn ariza topshirish uchun barcha hujjatlarning aslidan</b> 1 nusxa topshiriladi * Hujjatlarni onlayn(internet orqali) to'ldirib chop etiladi (O'qishga qabul qilish uchun ariza, o'qishga topshirishdan maqsadi va mutaxassislikni tanlash maqsadi, ta'lim olganligini tasdiqlash uchun rozilik har biri 1 nusxadan)	0	0
②	<b>Til bilish darajasini tasdiqlovchi hujjatning aslidan</b> 1 nusxa ▷ <b>Yangi qabul va o'qishni ko'chirish(Koreys treki):</b> Quyidagi bandleardan 1 tasi tanlanadi - Koreys tilini bilish sertifikat(TOPIK) - Daegu universiteti koreys tili ta'lim markazi 3-daraja yoki undan yuqori daraja sertifikat - Daegu universiteti koreys tilini bilish imtihonidan o'tganligi haqidagi sertifikat - Daegu universiteti koreys tilini bilish imtixon uchun ariza shakli - Qirol Sejong ta'lim markazi til kursini tamomlaganligi haqidagi sertifikat - KIIP dasturi ta'lim tasdiqnomasi yoki oldindan baholash (사전평가) guvohnomasi ▷ <b>Yangi qabul va o'qishni ko'chirish(Ingiliz tili yo'nalishi):</b> IELTS 5.5 yoki TOEFL IBT 3.5(eski tizim 59) dan baland bo'lgan natijani tasdiqlovchi hujjat ▷ <b>Yangi qabul va o'qishni ko'chirish(Xitoy treki):</b> Hozirgi shaxsni tasdiqlovchi hujjat nusxasi, * Til bilish sertifikatini bo'lgan holatda taqdim qilishingiz lozim	0	0
③	<b>Ariza topshiruvchining Chet elga chiqish (Qizil) pasportidan</b> 1 nusxa	0	0
④	<b>Ariza topshiruvchining ID kartasi (oldi va orqa tomoni)</b> nusxasi 1 ta * ID kartasi bor bo'lsagina topshiriladi(Koreyada istiqomat qilmaydigan talabalar topshirishi shart emas)	0	0
⑤	<b>Ota-ona Chet elga chiqish (Qizil) pasportidan</b> nusxa 1 tadan * Agar Chet elga chiqish(Qizil) pasporti bo'lmagan holatda Davlat ichki pasport nusxasini topshirish mumkin	0	0
⑥	<b>Olaviy(qarindoshlik)munosabatni tasdiqlovchi hujjat yoki tug'ilganligi haqidagi guvohnoma</b> aslidan 1 nusxa(notarial tarjima) * Xitoy millatiga mansub ariza topshiruvchi " Uy ro'yhati(Ota-ona bilan alchida yashagan holatda) nusxasini taqdim qilishi mumkin	0	0
⑦	<b>Bank hisob varag'idan ko'chirma</b> 1 nusxa ▷ Talaba yoki ota-onasining hisob raqamida 16.000.000 KRW yoki undan ortiq bo'lishi lozim * <b>Hujjat topshirish vaqtida 30 kun ichida olingan tasdiqnoma bo'lishi kerak.</b> Amal qilish muddati tugagan tasdiqnoma berilgan kundan boshlab 6 oygacha tan olinib, amal qilish muddati o'qishga kirish kuni(2026yil 1 mart)dan keyin tugashi kerak * Ariza topshiruvchi hozirda Daegu universitetida tahsil olayotgan bo'lsa (til kursi talabasi, talaba almashinuv bo'yicha kelganlar) Koreyadagi bankdan 8.000.000 KRWdan ortiq depozit puli 1 oy davomida turganligini tasdiqlovchi hujjatni topshirishlari mumkin * Koreyada istiqomat qilayotgan talabalar Koreyadagi bankdan olingan bank depozit tasdiqnomasini topshirishlari mumkin(Ariza topshirishdan boshlab 3 oy ichida)	0	0
⑧	<b>Kollej yoki Maktabni bitirganligi ( bitirishini ) tasdiqlovchi hujjat</b> nusxasi 1ta ▷ <b>Apostil</b> yoki konsullik tekshiruvidan o'tgan ta'lim olganligini tasdiqlovchi hujjat *O'qishni ko'chirayotgan talabalar orasida chet elda 4 yillik bakalavr ta'lim dasturining kamida 2 yilini tamomlagan talabalargina ariza topshirishlari mumkin	0	*qisman amal qilinuvchilar
⑨	<b>Kollej yoki Maktab baholar tabeli aslidan</b> 1ta nusxa *qisman amal qilinuvchilar: Ba'zi hollarda amal qiladi: Janubiy Koreyada yuqori maktabda (kolle) o'qigan shaxslar o'quvchi shaxsiy yig'majildini topshirishlari lozim	0	X
⑩	<b>O'qishni ( bitirganligi yoki bitirishini ) tasdiqlovchi hujjat aslidan 1 ta nusxa</b> ▷ <b>Apostil</b> yoki konsullik tekshiruvidan o'tgan ta'lim olganligini tasdiqlovchi hujjat	X	0
⑪	<b>Universitet baholar tabeli transkripti aslidan 1 ta nusxa</b> * Har bir fan bo'yicha kreditlar va foiz baholarini ko'rsatish talab qilinadi(Shu bilan birga qo'shimcha hujjat taqdim qilish mumkin)	X	0

### \* Ariza hujjatlarini topshirish bo'yicha eslatma

- ▶ Barcha hujjatlarning elektron chop etilgan nusxasi topshirilishi mumkin(Faqat, Ariza topshirilgan kundan xisoblaganda 6 oy ichida chop etilgan hujjatlarga tan olinib, Admission chiqishidan oldin asli nusxasi bilan tasdiqlanishi yoki asl nusxasi taqdim qilinishi lozim)
- ▶ Koreys tili yoki ingliz tili, xitoy tillaridan boshqa tilda topshirilgan hujjatlar, tekshirish va ko'rib chiqish jarayoni uchun tarjimasini (koreys tili yoki ingliz tili) bilan taqdim etilishi lozim.
- ▶ Chet elda to'liq ta'lim olgan xorijlik ariza topshiruvchi boshlang'ich-o'rta va yuqori maktabda ta'lim olganligini tasdiqlovchi hujjatlarni taqdim qilishi lozim
- ▶ ⑧~⑪ **bandlardagi taqdim qilingan hujjalar qaytarilmaydi/ Viza(viza berish, yashash joyini o'zgartirish)ga kerak bo'ladigan hujjatlar arizachi tomonidan shaxsan taqdim etilishi kerak**
- ▶ Bitirishni kutayotgan yoki hozirda ta'lim olayotganligi to'g'risidagi guvohnoma bilan ariza topshirgan talabalar o'qishga qabul qilingandan so'ng eng so'ngi ta'lim darajasini tasdiqlovchi hujjat va transkriptlarni qo'shimcha sifatida topshirishlari kerak
- ▶ Izoh1), Izoh2) Xitoy millatiga mansub talabalar Xitoy ta'lim vazirligining akademik ma'lumot sertifikatini berish saytidan olingan Bitirganligi haqidagi hujjatni asl nusxada taqdim qilishlari mumkin(<http://www.cdgdc.edu.cn> yoki <http://www.chsi.com.cn>)

## [Appendix 3] Guide to Application Documents(Mongolian/ Монгол)

БҮрдүүлэх материал

БҮрдүүлэх материал		Шинэ	Шилжин
①	<b>Онлайн бҮртгэлийн бҮх бичиг баримт</b> эх хувь 1 хувь* Онлайн (интернет) орчинд бичиг баримтаа бөглөсний дараа хэвлэх (Элсэлтийн анкет, Сургууль болон мэргэжил сонгосон шалтгаан, Боловсролын ла влагаа авах зөвшөөрлийн бичиг тус бүр 1 хувь)	0	0
②	<b>Хэлний мэдлэг батлах бичиг баримт</b> эх хувь 1 хувь ▷ Шинээр элсэх болон дамжин суралцах(Солонгос хэлний хөтөлбөр): Дараах бичиг бар им туудаас 1-ийг сонгох - Солонгос хэлний тҮвшин тогтоох шалгалт (ТОPIK)-ын онооны гэрчилгээ - ТэгҮ Их Сургуулийн Солонгос хэлний боловсролын төвийн 3-р тҮвшнээс дээш тҮвшний төгсөлтийн гэрчилгээ - ТэгҮ Их Сургуулийн Солонгос хэлний тҮвшин тогтоох шалгалтыг тэнцсэн гэрчилгээ - ТэгҮ Их Сургуулийн Солонгос хэлний тҮвшин тогтоох шалгалтад бүртгүүлсэн өргөдөл(Солонгост байгаа тохиолдолд) - Сэжон Солонгос хэлний сургалтыг төгссөн гэрчилгээ - Нийгэмшүүлэх хөтөлбөрийн сургалтын батламж эсвэл урьдчилсан Үнэлгээний онооны гэрчилгээ ▷ Шинээр элсэх болон дамжин суралцах(Англи хэлний хөтөлбөр): IELTS 5.5 эсвэл TOEFL iBT 3.5 (хуучин 59)-аас дээш онооны гэрчилгээ ▷ Шинээр элсэх болон дамжин суралцах(Хятад хэлний хөтөлбөр): Иргэний Үнэмлэхний хуулбар, * Хэрэв хэлний мэдлэгийг батлах баримт бичиг байгаа бол нэмэлтээр хавсаргана.	0	0
③	<b>Элсэгчийн гадаад паспорт</b> хуулбар 1 хувь	0	0
④	<b>Элсэгчийн цэнхэр Үнэмлэх</b> хуулбар 1 хувь (урд, хойд) * Зөвхөн цэнхэр Үнэмлэхтэй бол (Солонгост оршин суудаггүй бол шаардлагагүй)	0	0
⑤	<b>Эцэг эхийн гадаад паспорт тус бүр</b> хуулбар 1 хувь * Хэрэв гадаад паспорт байхгүй бол өөрийн иргэний Үнэмлэхийг гаргаж болно.	0	0
⑥	<b>Төрөл садангийн гэрчилгээ эсвэл төрсний гэрчилгээ</b> (орчуулга, нотариатаар баталгаажуулсан) 1 хувь	0	0
⑦	<b>Банкны дансны Үлдэгдлийн баталгааны бичиг</b> эх хувь 1 хувь ▷ БҮртгүүлэгч эсвэл эцэг эхийн нэр дээр KRW 16,000,000-аас дээш байх * <b>Бичиг баримтыг өгч буй өдрөөс хойш 30 хоногийн дотор олгосон байх.</b> Хэрэв хҮчи нтэй хугацаа заасан бол олгосон өдрөөс хойш 6 сар хҮртэл хҮчинтэй ба 2~3 дахь элсэлтийн бүртгэлд хамрагдах бол хҮчч-интэй хугацаа 2026 оны 9-р сарын 1-нээс хойш дуусах ёстой * Хэрэв БҮртгүүлэгч нь манай их сургуулийн оюутан (хэлний бэлтгэл, оюутан солилцооны хөтөлбөр гэх мэт) бол KRW 8,000,000-аас дээш 1 сарын хугацаанд байршуулсан мөнгөний Үлдэгдэлтэй дотоодын банкны баталгааны бичиг ирүүлэх боломжтой * Солонгост оршин суугаа хҮн бол дотоодын банкны баталгааны бичиг гаргах(Өргөдөл хҮлээн авах өдрөөс 3 сарын дотор олгосон байх)	0	0
⑧	<b>Ахлах сургуулийн төгсөлтийн (төгсөх ангийн) гэрчилгээ</b> 1 хувь ▷ Апостиль (Apostille) * Холбогдох тохиолдол: Шилжин суралцагчдын хувьд дотоод, гадаадын 4 жилийн их сургуу лийн хөтөлбөрийн 2 ба түүнээс дээш жил суралцсан бол өгөх	0	Зарим нь хамааралт ай
⑨	<b>Ахлах сургуулийн дҮнгийн тодорхойлолт</b> эх хувь 1 хувь * Холбогдох тохиолдол: ахлах сургуулын боловсролын тҮвшний сургалтыг нотлох шаардлагатай.	0	X
⑩	<b>Их дээд сургуулийн дипломын хуулбар</b> *2) ▷ Апостиль(Apostille) Консулын газраас баталгаажуулсан боловсролыг баталгаажуулсан баримт бичиг	X	0
⑪	<b>Их дээд сургуулийн дҮнгийн тодорхойлолт</b> эх хувь * Хичээл бүрийн кредит Үнэлгээг хувиар гаргасан байх шаардлагатай(эсвэл нэмэлт бичиг барим т бүрдүүлэх)	X	0

### \* Бичиг баримт бүрдүүлэхтэй холбоотой анхаарах зүйлс

- ▶ БҮх бичиг баримтыг хуулбараар өгөх боломжтой(Гэхдээ БҮртгэлийн өдрөөс өмнөх 6 сарын дотор олго сон баримтыг хҮчинтэйд тооцох бөгөөд нотариатаар батлуулсан эсвэл эх хувийг өгөх шаардлагатай)
- ▶ Солонгос, англи, хятад хэлнээс бусад хэл дээр гаргасан бичиг баримтыг Үнэн зөвийг шалгах болон хянан Үзэх зорилгоор орчуулгын хувилбарыг (солонгос эсвэл англи хэл дээр) хамт хавсаргах.
- ▶ БҮх боловсролын шатлал (бага, дунд, ахлах сургууль)-ыг гадаадад дҮүргэсэн гадаадын иргэн нь бҮ х боловсролын т Үвшний сургалтыг нотлох шаардлагатай.
- ▶ ⑧~⑪ дугаартай бичиг баримтыг буцаан олгохгүй /виз (оршин суух зөвшөөрөл авах, визийн төрөл өөр члөх) авахад шаардлагатай бичиг баримтыг өөрөө бэлтгэнэ.
- ▶ Төгсөх хҮлээгдэж буй болон суралцаж буйг нотлох баримт бичгээр БҮртгүүлсэн тохиолдолд, эцсийн б оловсролын б аримт болон дҮнгийн хуудсыг нэмэлтээр гаргаж өгөх шаардлагатай.

## [Appendix 4] Guide to Application Documents(Japanese/ 日本語)

### □ 志願書類

提出書類		新入学	編入学
①	オンライン願書受付書類全て 原本1部 ※ オンライン(インターネット)で書類作成後印刷(入学願書, 志望動機・専攻選択目的, 学力照会同意書 各 1部)	0	0
②	語学能力認定証明書類 原本 1部 ▷ 新・編入学(韓国語トラック): 下記項目の内1つを選択し提出 - 韓国語能力試験(TOPIK)成績証明書 - 大邱大学校韓国語教育センターLevel 3 以上修了証 - 大邱大学校韓国語能力試験 合格証 - 大邱大学校韓国語能力試験 受験願書(韓国国内) - 世宗学堂韓国語 修了証明書 - 社会統合プログラム教育確認書または事前評価試験の成績証明書 ▷ 新・編入学(英語トラック): IELTS 5.5またはTOEFL iBT 3.5 (旧59) 以上の成績証明書 ▷ 新・編入学(中国語トラック): 現地身分証写本(コピー), ※語学能力認定証明書類がある場合提出	0	0
③	志願者の(国際)パスポート 写本(コピー) 1部	0	0
④	志願者の外国人登録証(前・後面) 写本(コピー) 1部 ※ 外国人登録証所持者のみ提出(韓国に在留していない場合は提出義務なし)	0	0
⑤	両親の(国際)パスポート 写本(コピー) 母・父 各1部, ※パスポートがない場合国家発行の身分証も可	0	0
⑥	家族(親族)関係証明書または出生証明書 原本(翻訳公証本) 1部 ※ 中国国籍の志願者は“戸籍部(両親と志願者が分離されていない場合) 写本” 提出可能	0	0
⑦	銀行残高証明書 原本 1部 ▷ 本人または両親名義の KRW 16,000,000 以上の銀行残高証明書 ※ 書類提出日基準30日以内に発行された証明書でなければならない。ただし, 有効期間が明記されている残高証明書の場合は発効日から6ヶ月まで認められ, 有効期間が入学日(2026.9.1.予定)以降に満了するものでなければならない。 ※ 志願者が本学在籍中の学生(語学堂生・交換留学生等)の場合, 1ヶ月預置された8,000,000円以上の韓国国内の銀行の残高証明書も可 ※ 国内に在留中の者は韓国国内の銀行の預金残高証明書を提出(願書受付日基準3ヶ月以内のもの)	0	0
⑧	高等学校の卒業(予定)証明書 <sup>注1)</sup> 原本 1部 ▷ アポステイーユ(Apostille) または領事認証を受けた学力認定書類 ※一分該当: 編入学志願者のうち国内外の4年制大学の学士学位課程を2年以上修了生は提出	0	*一部 該当
⑨	高等学校全学年の成績証明書 原本 1部 ※一部該当: 韓国国内の高等学校に在学した履歴のある者は学生生活記録簿を提供が必要	0	X
⑩	大学学力(卒業, 卒業予定, 修了) 証明書 <sup>注2)</sup> 原本 1部 ▷ アポステイーユ(Apostille) または領事認証を受けた学力認定書類	X	0
⑪	大学の全学年の成績証明書 原本 1部 ※ 1科目当たり単位および百分位の成績表記が記載されているもの(または追加書類提出)	X	0

### ※ 志願書類提出に関する留意事項

- ▶ 全ての書類は写本(コピー)本の提出可(ただし志願受付日基準6か月以内に発行された書類のみ有効とし, 標準入学許可書発行前までに必ず原本対照確認または原本提出が必要)
- ▶ 韓国語・英語・中国語以外の言語で作成された書類は事実確認と審査の為に韓国語または英語の翻訳本の提出必要
- ▶ 志願資格のうち“両親ともに外国人”ではなく“外国で全教育課程を履修した外国人”として志願するものは小・中・高を含む全学歴を立証が必要
- ▶ ⑧~⑩の書類は提出後返却しない/ビザ申請(査証発行, 在留資格変更)に必要な書類については志願者本人が追加用意
- ▶ 卒業予定/在学証明書の提出をした者は合格者発表後に最終学歴証明書類および成績表の追加提出が必須
- ▶ 注1), 注2) 中国国籍の学生は中国教育部学歴認定証明書発行サイトで発行された卒業認定証の原本で提出可能 (<http://www.cdgc.edu.cn> または <http://www.chsi.com.cn>)

